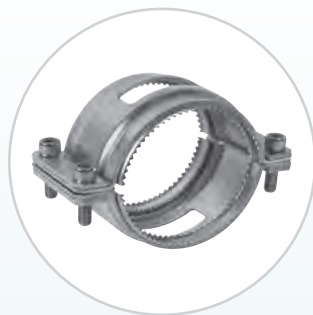
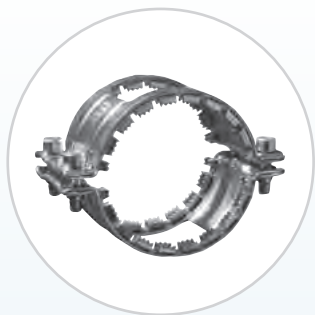


NORMACONNECT® DCS – Infrastructure Connectors

The complete NORMACONNECT® DCS range has been proven a million times when used to achieve both a reliable and economic connection of socketless drainage pipes. Inside buildings, in underground car parks, buried in soil and for drainage systems in bridges, NORMACONNECT® DCS is the ideal connecting solution. A large number of well-known companies have been using our know-how in the development and manufacture of pipe connections for many years. Thus behind many successful brands enjoying a well established reputation you can find the certified quality and the reliability of NORMA® connections. Since the materials for our products are carefully chosen to match their applications and operating conditions, we can assure you that they function safely for a long time – as you would expect from a modern piping system.



Certificates, Liability, Memberships

Certificates Materialprüfungsamt Nordrhein-Westfalen (MPA NRW)

Liability Product liability: In case of bodily injury and/or material damage.

Memberships IZEG – Informationszentrum Entwässerungstechnik Guss
GEG – Gütergemeinschaft Entwässerungstechnik Guss



Informationszentrum
Entwässerungstechnik Guss e.V.



Entwässerungstechnik
Guss

Materials at a Glance

MATERIALS FOR COUPLINGS AND RESTRAINT COLLARS				
	COLLAR	CLAMPING UNIT	SCREWS, NUTS, BOLTS	SEALING SLEEVE
W1			Steel, protected surface	-
W2	AISI 430 Ti	AISI 304	Steel, protected surface	EPDM
W4	AISI 304	AISI 304	AISI 304	EPDM
W5	AISI 316 Ti	AISI 316 Ti	AISI 316	EPDM

	COLLAR	CLAMPING UNIT	SCREWS	SEALING SLEEVE
W2	AISI 304	Steel, protected surface	Steel, protected surface	EPDM
W5	AISI 316 Ti	AISI 316 Ti	AISI 316	EPDM

Products and Application at a Glance

TYPE	DN AND PRESSURE [bar]											SEAL TYPE	MATERIAL	APPLICATION				
	40	50	70	70/80	100	125	150	200	250	300	400			500	600	STANDARD	Buildings	Bridges
NON-PULL-OUT RESISTANT CONNECTIONS																		
RAPID	•	•	•	•	•	•	•	•	•	•	•	•	•	EPDM	W 2	•	-	-
RAPID	•	•	•	•	•	•	•	•	•	•	•	•	•	EPDM	W 5	•	•	•
MSM	•	•	•	•	•	•	•	•	•	•	•	•	•	EPDM	W 2	•	-	-
RAPID	•	•	•	•	•	•	•	•	•	•	•	•	•	EPDM	W 2	•	-	-
CV	•	•	•	•	•	•	•	•	•	•	•	•	•	EPDM	W 2	•	-	-
CE	•	•	•	•	•	•	•	•	•	•	•	•	•	EPDM	W 4	•	-	•*
SVE	•	•	•	•	•	•	•	•	•	•	•	•	•	NR-SBR	PP-CO	-	-	•
PULL-OUT RESISTANT CONNECTIONS																		
UNIVERSAL Restraint Collar **															W 2	•	-	-
RECORD Restraint Collar **	10	10	10	10	10	5	5	3							W 1	•	-	-
COMBI Restraint Collar **	10	10	10	10	5	5									W 1	•	-	-
CHANGEOVER CONNECTORS																		
FIX	•	•	•	•	•	•	•	•	•	•	•	•	•	EPDM	-	•	-	-

* Additional protection against corrosion * NBR on request Technical Changes reserved
** The collars are only suitable for open drainage systems. It is not allowed to use it for closed pressure systems.



- 1 Hexagonal socket bolt with washer
- 2 Square nut
- 3 Closure unit
- 4 Collar
- 5 Sealing sleeve

The original Rapid with block tightening

The DCS RAPID with block tightening for non-pull-out resistant connections enables a fast connection. The visible torque control and the single-bolt closure provide for a fast and easy installation.



Materials

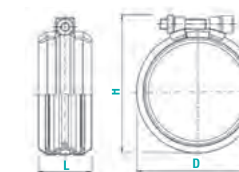
W1	W2	W3	W4	W5
	x			x

- W2, W5**
- Material, Collar: AISI 430 Ti
 - Material, Clamping unit: AISI 304 / AISI 430 Ti
 - Material, Bolts/Nuts: Steel, surface protected
 - Material, Sealing sleeve: EPDM

Information

- Resisting axial pull-out forces up to max. 0.5 bar
- DN 40 – DN 200
- Resisting axial pull-out forces up to max 0.3 bar
- DN 250 – DN 300
- Defined locking torque without using a special tool
- Meeting the fire protection requirements

Technical data & Ordering information



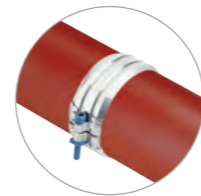
NORMACONNECT® DCS RAPID									
Designation	Max. Dimensions after Assembly ~							W2 Product No.	W5 Product No.
	DN	D (mm)	H (mm)	L (mm)	P max (bar)	Torque (Nm)	Bolt (mm)		
RAPID DN 40	40	53	64	50	0.5	Tight-Locking	M 5	0245 8254 040	
RAPID DN 50	50	70	80	46	0.5	Tight-Locking	M 8	0245 8218 050	0245 8126 050
RAPID DN 70	70	90	100	43	0.5	Tight-Locking	M 8	0245 8219 070	0245 8127 070
RAPID DN 75	75	87	97	40.5	0.5	Tight-Locking	M 8	0245 8265 075	
RAPID DN 80	75/80	95	105	40	0.5	Tight-Locking	M 8	0245 8220 080	0245 8129 075
RAPID DN 100	100	125	135	39.0	0.5	Tight-Locking	M 8	0245 8221 100	0245 8130 100
RAPID DN 125	125	147	162	37.0	0.5	Tight-Locking	M 8	0245 8222 125	0245 8131 125
RAPID DN 150	150	172	187	35.5	0.5	Tight-Locking	M 8	0245 8223 150	0245 8132 150
RAPID DN 200	200	227	244	33.5	0.5	Tight-Locking	M 10	0245 8224 200	0245 8133 200
RAPID DN 250	250	293	306	96	0.3	Tight-Locking	M 10		0245 8208 250
RAPID DN 300	300	345	360	96	0.3	Tight-Locking	M 10		0245 8209 300



- 1 Hexagonal socket bolt with washer
- 2 Square nut
- 3 Closure unit
- 4 Collar
- 5 Sealing sleeve

The fast connection with quick release closure

The DCS RAPID MSM connection is easy-fitting and thus especially suitable for repair purposes. It is the fast connection with quick release closure for non-pull-out resistant connections.



Materials

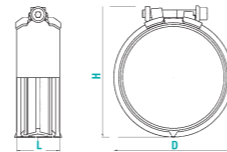
W1	W2	W3	W4	W5
	x			

- W2**
- Material, Collar: AISI 430 Ti
 - Material, Clamping unit: AISI 304 / AISI 430 Ti
 - Material, Bolts/Nuts: Steel, surface protected
 - Material, Sealing sleeve: EPDM

Information

- Resisting axial pull-out forces up to max. 0.5 bar
- Defined locking torque without using a special tool
- Meeting the fire protection requirements

Technical data & Ordering information



NORMACONNECT® DCS RAPID MSM								
Designation	Max. Dimensions after Assembly ~							W2 Product No.
	DN	D (mm)	H (mm)	L (mm)	P max (bar)	Torque (Nm)	Bolt (mm)	
RAPID DN 50 MSM	50	70	80	40	0.5	Tight-Locking	M 8	0245 8257 050
RAPID DN 70 MSM	70	90	100	40	0.5	Tight-Locking	M 8	0245 8258 070
RAPID DN 80 MSM	75/80	95	105	40	0.5	Tight-Locking	M 8	0245 8260 080
RAPID DN 100 MSM	100	125	135	46	0.5	Tight-Locking	M 8	0245 8261 100
RAPID DN 125 MSM	125	147	162	55	0.5	Tight-Locking	M 8	0245 8262 125
RAPID DN 150 MSM	150	172	187	55	0.5	Tight-Locking	M 8	0245 8263 150
RAPID DN 200 MSM	200	227	244	70	0.5	Tight-Locking	M 10	0245 8264 200



- 1 CV: Slotted hexagonal head bolts
DN 50 – DN 300: SW 10
CE: Hexagonal head bolts
DN 50, 70, 75/80: SW 10
DN 100 – DN 300: SW 13
- 2 Guide plate
- 3 Threaded plate
- 4 Collar
- 5 Sealing sleeve

The proven standard collar

The DCS CV/CE collar has been proven in all kinds of standard drainage applications. The proven standard collar for non-pull-out connections.

Materials

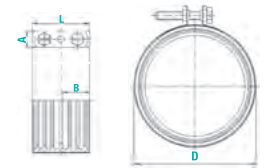
W1	W2	W3	W4	W5
	x		x	

- W2**
- Material, Collar: AISI 430 Ti
- Type CV**
- Material, Clamping unit: Steel, surface protected
 - Material, Sealing sleeve: EPDM
 - Material, Bolts: Steel, surface protected
- W5**
- Material, Collar: AISI 304
- Type CE**
- Material, Clamping unit: AISI 304
 - Material, Sealing sleeve: EPDM
 - Material, Bolts: Steel, surface protected

Advantages at a glance

- Fast and easy installation
- Suitable for repair purposes

Technical data & Ordering information



NORMACONNECT® DCS CV								
Designation	DN	A (mm)	B (mm)	D (mm)	L (mm)	Torque (Nm)	Bolt (mm)	W2 Product No.
CV DN 50	50	14	22.5	65	48	4-6	M 6	0242 8091 050
CV DN 70	70	14	22.5	85	48	4-6	M 6	0242 8092 070
CV DN 80	75/80	14	22.5	90	48	6-8	M 6	0242 8093 075
CV DN 100	100	18	22.5	115	54	10-12	M 8	0262 8303 100
CV DN 125	125	18	31	140	65	10-12	M 8	0262 8304 125
CV DN 150	150	18	31	170	65	10-12	M 8	0262 8305 150
CV DN 200	200	18	37	220	78	15-20	M 8	0262 8306 200
CV DN 250	250	18	37	286	78	15-20	M 8	0262 8307 250
CV DN 300	300	18	37	338	78	15-20	M 8	0262 8308 300

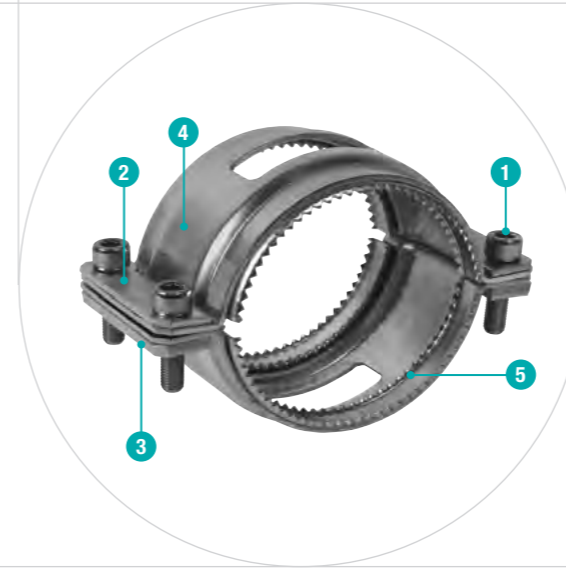
NORMACONNECT® DCS CE								
Designation	DN	A (mm)	B (mm)	D (mm)	L (mm)	Torque (Nm)	Bolt (mm)	W4 Product No.
CE DN 50	50	14	22.5	65	48	4-6	M 6	0242 8108 050
CE DN 70	70	14	22.5	85	48	4-6	M 6	0242 8109 070
CE DN 100	100	18	22.5	115	54	10-12	M 8	0262 8361 100
CE DN 125	125	18	31	140	65	10-12	M 8	0262 8362 125
CE DN 150	150	18	31	170	65	10-12	M 8	0262 8363 150
CE DN 200	200	18	37	220	78	15-20	M 8	0262 8364 200
CE DN 250	250	18	37	286	78	15-20	M 8	0262 8365 250
CE DN 300	300	18	37	338	78	15-20	M 8	0262 8366 300

DCS CE is also available with a round hexagonal head bolt on request.

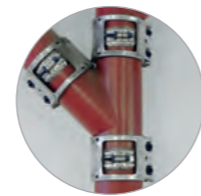
DCS CV is also available with a round hexagonal head bolt on request.



- 1 Hexagonal socket bolts
- 2 Guide bolt
- 3 Threaded bolt
- 4 Housing
- 5 Grip ring insert



- 1 Hexagonal socket bolt with fine pitch thread
- 2 Guiding plate
- 3 Threaded plate
- 4 Housing
- 5 Grip ring insert (hardened)



Combined with either DCS RAPID, DCS RAPID MSM or DCS CV/CE standards collars, our DCS Universal restraint collars ensure that the system can withstand even high tensile loads. The grip-type coupling which resists high tensile loads for non-pull-out resistant connections.

The powerful add-on collar

Axial restraint safety clamp for use with pressurized pump lines in lifting systems as well as for rainwater sewage lines that are at risk of undergoing back pressures, but only in combination with the DCS RAPID standard collar. The powerful add-on collar for non-pull-out resistant connections.

Materials

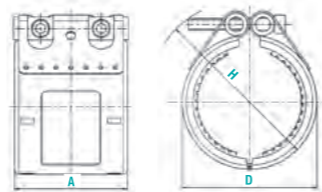
W1	W2	W3	W4	W5
	x			

- W2
- Material, Housing: AISI 430 Ti
 - Material, Closure unit: Steel, surface protected
 - Material, Grip ring: AISI 301

Information

- Recommended for use in combination with types RAPID/ RAPID MSM, CV/CE: up to max. 5 bar (DN 200); up to max. 3 bar (DN 250 – DN 300)

Technical data & Ordering information



NORMACONNECT® DCS UNIVERSAL RESTRAINT COLLAR									
Designation	DN	A (mm)	D (mm)	H (mm)	Bolt (mm)	P max (bar)		Torque (Nm)	W2 Product No.
						RAPID / RAPID MSM	CV/CE		
UNIVERSAL RESTRAINT COLLAR DN 200	200	113	240	270	M 12	5	5	Tight-Locking	0262 8415 200
UNIVERSAL RESTRAINT COLLAR DN 250	250	139	305	335	M 12	3	3	Tight-Locking	0262 8416 250
UNIVERSAL RESTRAINT COLLAR DN 300	300	139	400	490	M 12	3	3	Tight-Locking	0262 8417 300

Materials

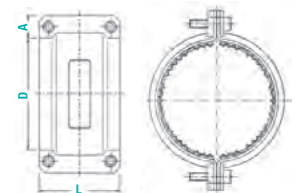
W1	W2	W3	W4	W5
x				

- W1
- Material, Housing: Steel, surface protected
 - Material, Closure unit: Steel, surface protected

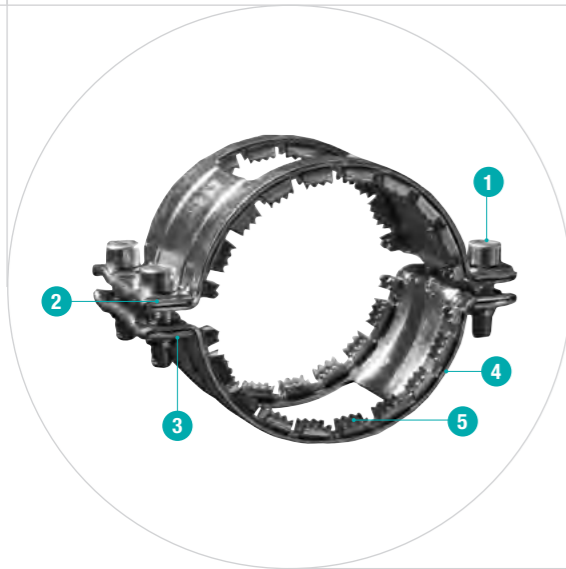
Advantages at a glance

- Two parts (halves) with hardened grip ring inserts
- Strong guiding plates with threaded holes plus four hexagonal socket bolts with fine pitch thread

Technical data & Ordering information



NORMACONNECT® DCS RECORD RESTRAINT COLLAR								
Designation	DN	A (mm)	D (mm)	L (mm)	Torque (Nm)	Bolt (mm)	P max (bar)	W1 Product No.
RECORD RESTRAINT COLLAR DN 40	40	21	65	66	12-15	M 8	up to 10	0262 1272 040
RECORD RESTRAINT COLLAR DN 50	50	21	75	69	12-15	M 8	up to 10	0262 1265 050
RECORD RESTRAINT COLLAR DN 70	70	21	95	69	12-15	M 8	up to 10	0262 1266 070
RECORD RESTRAINT COLLAR DN 80	75/80	21	100	69	12-15	M 8	up to 10	0262 1287 080
RECORD RESTRAINT COLLAR DN 100	100	25	135	87	25-30	M 10	up to 10	0262 1246 100
RECORD RESTRAINT COLLAR DN 125	125	25	160	95	30-35	M 10	up to 5	0262 1267 125
RECORD RESTRAINT COLLAR DN 150	150	25	185	95	30-35	M 10	up to 5	0262 1268 150
RECORD RESTRAINT COLLAR DN 200	200	30	235	111	60-65	M 12	up to 3	0262 1269 200



- 1 Hexagonal socket bolts
- 2 Guiding side
- 3 Threaded side
- 4 Housing
- 5 Grip ring insert



- 1 Easy handling
- 2 Strong worm-drive hose clip

The powerful add-on collar

Axial restraint safety clamp for connecting rainwater and sewage lines that are at risk of undergoing back pressures, used in combination with RAPID/RAPID MSM and CV or CE standard collars. The powerful add-on collar for non-pull-out resistant connections.

Materials

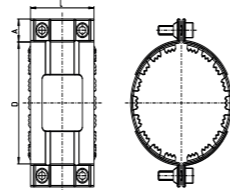
W1	W2	W3	W4	W5
x				

- W1
- Material, Housing: Steel, surface protected
 - Material, Closure unit: Steel, surface protected

Information

- Axial restraint up to 10 bar
- Diameters DN50 up to DN 150

Technical data & Ordering information



NORMACONNECT® DCS COMBI RESTRAINT COLLAR								
Designation	DN	A (mm)	D (mm)	L (mm)	Torque (Nm)	Bolt (mm)	P max (bar)	W1 Product No.
COMBI RESTRAINT COLLAR DN 50	50	22	81	72	18-20	M 8	up to 10	2628590050
COMBI RESTRAINT COLLAR DN 70	70	22	102	72	18-20	M 8	up to 10	2628590070
COMBI RESTRAINT COLLAR DN 80	80	22	110	72	18-20	M 8	up to 10	2628590080
COMBI RESTRAINT COLLAR DN 100	100	22	136	82	28-30	M 10	up to 10	2628591100
COMBI RESTRAINT COLLAR DN 125	125	23.5	162	93	28-30	M 10	up to 5	2628592125
COMBI RESTRAINT COLLAR DN 150	150	23.5	189	93	33-35	M 10	up to 5	2628592150

The changeover connector with 2 lip seals

Materials

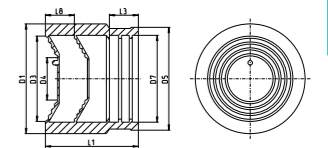
W1	W2	W3	W4	W5
	x			

- Material, Connector: EPDM
- Material, Worm-drive hose clip band: AISI 430

Advantages at a glance

- The connection of feed or suction lines to a pipe – either made of steel or plastics – is easily and safely achieved with the FIX connector.

Technical data & Ordering information



NORMACONNECT® DCS FIX, EPDM with TORRO W2, Changeover Connector										
Designation	DN	D1 (mm)	D3 (mm)	D4 (mm)	D5 (mm)	D7 (mm)	L1 (mm)	L3 (mm)	L8 (mm)	W2 Product No.
FIX DN 50	50	72	56	30	67.5	57	63	19	19	0245 9003 050
FIX DN 70	70	92	75	41	86.5	77	77	19	24	0245 9003 070
FIX DN 80 56-75	80	92	75	41	91	81	77	19	24	0245 9003 075
FIX DN 80 75-90	80	108	90	58	93	81	88	19	23	0245 9003 080
FIX DN 100	100	128	110	78	118	108	95	21	23	0245 9003 100
FIX DN 125	125	145	126	90	145	132	103	21	27	0245 9003 125



- 1 Housing
- 2 Sealing lips

The collar for buried drainage pipes

Used achieve fast and easy connection of below ground drainage pipes, while also accommodating larger gaps between pipe ends. The DCS collar for buried drainage pipes for non-pull-out connections is the universal solution for many applications.

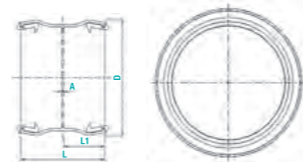
Materials

- Material, Housing: Polypropylene-CO
- Material, Seal: NR-SBR

Information

- Collar made from polypropylene with built-in sealing lips
- Compensates for larger gaps between pipe ends

Technical data & Ordering information



NORMACONNECT® DCS SVE CONNECTION, PP-CO with built-in sealing lips NR-SBR							
Designation	DN	D (mm)	L (mm)	L' (mm)	A (mm)	Bolt (mm)	Polypropylene-CO Product No.
DCS SVE DN 50	50	77	60	29	2	M 6	0242 8108 050
DCS SVE DN 80	75/80	103.5	65.5	32	2	M 6	0242 8109 070
DCS SVE DN 100	100	134	82	39.5	3	M 8	0262 8361 100
DCS SVE DN 125	125	161	103	50	3	M 8	0262 8362 125
DCS SVE DN 150	150	186	103	50	3	M 8	0262 8363 150
DCS SVE DN 200	200	238	114	55.5	3	M 8	0262 8364 200

Dimensions of pipes and fittings to EN 877

DN	Dimensions of pipes and fittings to EN 877			
	Outside Diameter (OD)		Wall Thickness	
	Nominal value	Tolerances	Nominal value	Minimum value
40	48	+2 -1	3.0	2.5
50	58	+2 -1	3.5	3.0
70	78	+2 -1	3.5	3.0
75/80	83	+2 -1	3.5	3.0
100	110	+2 -1	3.5	3.0
125	135	+2 -2	4.0	3.5
150	160	+2 -2	4.0	3.5
200	210	+2.5 -2.5	5.0	4.0
250	274	+2.5 -2.5	5.5	4.5
300	326	+2.5 -2.5	6.0	5.0
400	429	+2 -3	6.3	5.0
500	532	+2 -3.5	7.0	5.2
600	635	+2 -4	7.7	5.8

Dimensions in mm



Recommendation NORMACONNECT® FLEX E and GRIP E EPDM W2 and W5 for SML

Recommendation NORMACONNECT® FLEX E and GRIP E EPDM W2 and W5 for SML				
SML	FLEX E W2 EPDM	GRIP E W2 EPDM	FLEX E W5 EPDM	GRIP E W5 EPDM
DN 50	5829100060	5799100060	5829300060	5799300060
DN 70	-	-	-	-
DN 80	5829100084	5799100084	5829300084	5799300084
DN 100	5829100110	5799100110	5829300110	5799300110
DN 125	5829100139	5799100139	5829300139	5799300139
DN 150	5829100159	5799100159	5829300159	5799300159
DN 200	5838120210	5748100210	5838320210	5748300210
DN 250	5838120273	5748100273	5838320273	5748300273
DN 300	5838120326	5748100326	5838320326	5748300326
DN 400	5838120429	5748100429	5838320429	5748300429
DN 500	5838120531	5748100531	5838320531	5748300531
DN 600	5838120634	5748100634	5838320634	5748300634